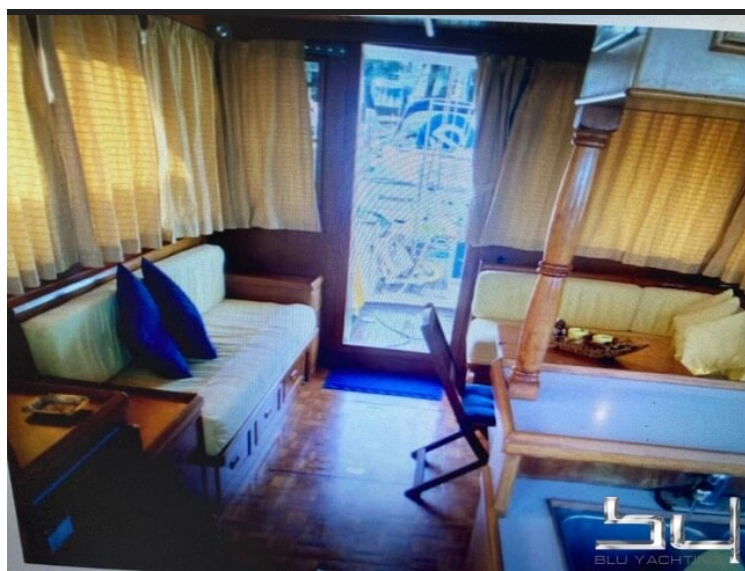


View the
yacht at
BLU
YACHTING
Aprilia Marittima (UD)



Construction year	1983
Color	-
Material	GFK
Engine	2 x Volvo Penta TAMD 60B (250 PS)
Output	2300 h
Transmission	Shaft
Cruising speed	16 kn
Max. speed	20 kn
Length	11,66 m (38,25 ft)
Width	4,17 m (13,68 ft)
Draft	1,30 m (4,27 ft)
Weight	12000 kg
Fuel tank	Diesel (1200 l)
Fresh water tank	600 l
Cabins	2
Beds	6
Bathrooms	1
Berth	Aprilia Marittima (UD)

~~49.000 EUR~~
39.000 EUR

EU VAT paid
+ brokerage commission

Equipment

Radio, Gangway, GPS, Compass, Bimini, Landconnection, Anchor winch, Pressurized water, Hot water, Bathing platform, Fridge

Description & Specifications

Used boat

Boat Show

nice trawler yacht, 1 engine overhauled 2021, 2.Owner

GPS

FIX PRICE

we sell it as it is as it stands with running engines.

